

Xavier School's Wastewater Recycling Facility

Presentation to CEAP
September 23, 2010
Waterfront Hotel, Cebu City



Shareholder Value
versus
Stakeholder Value

Employee Satisfaction

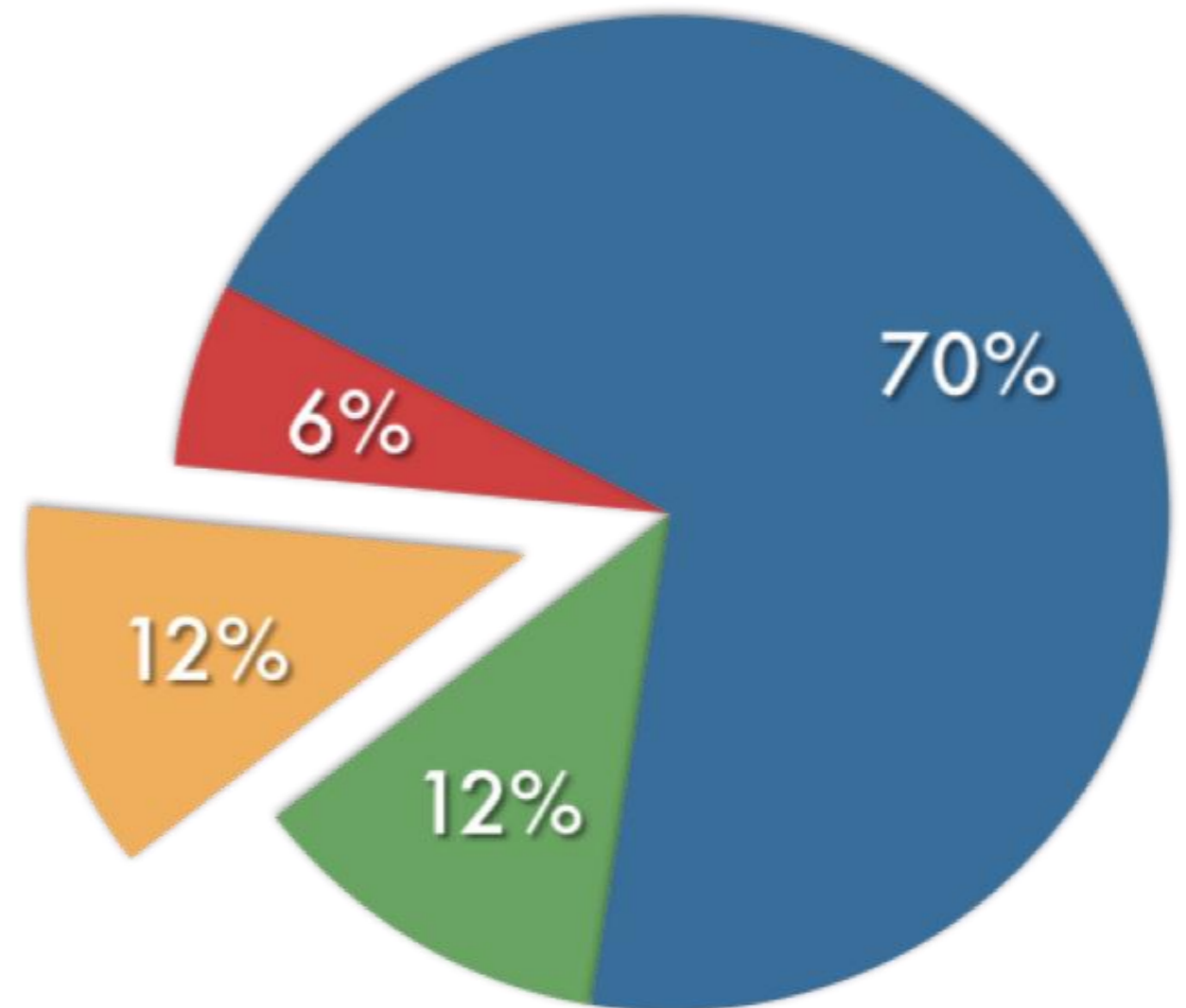


Customer Satisfaction

Community Development

A Typical School's Expense Breakdown

- ★ 70%
Manpower/Agency
- ★ 12% Depreciation
- ★ 12% Utilities
- ★ 6% Others



How are these Expenses Managed?

Manpower/Agency	70%	Personnel Policies
Depreciation	12%	Major Expenditures Proposals
Utilities	12%	?
Others	6%	?

Eco Sustainability Project

- ★ Comprehensive approach to Eco Sustainability
- ★ Involve the entire community
- ★ Energy Conservation/Alternative Energy
- ★ Water Conservation/Water Recycling
- ★ Waste Management Program
- ★ Integrated into curriculum
- ★ Learning by living, Practice what you preach

Energy Conservation Challenge

- ★ 3 school years ago
- ★ Consumption: 2M kWh per annum
- ★ Aim: save 6% or 120k kWh/annum
- ★ Mainly the suggestions from Faculty & Staff



Energy Conservation Challenge

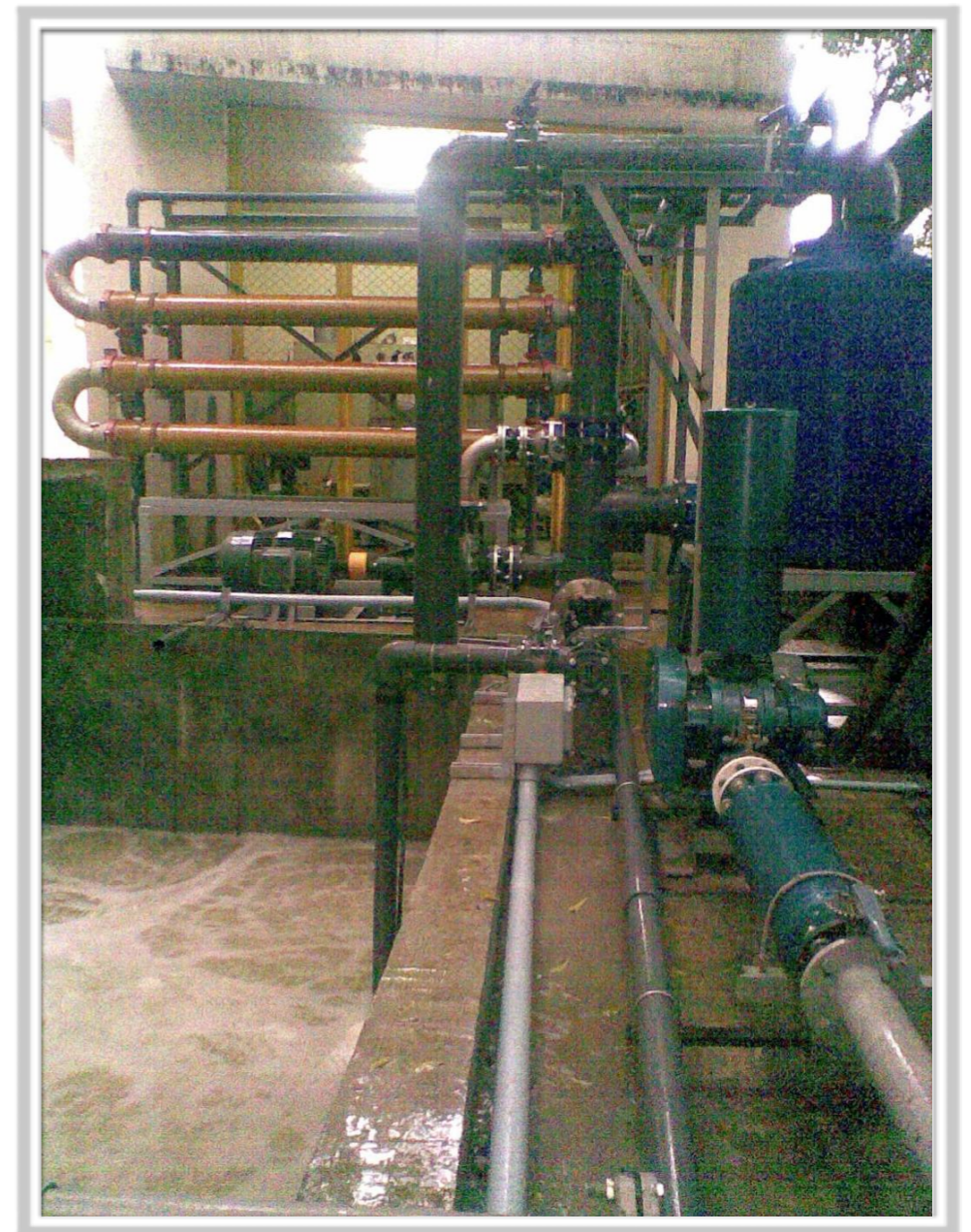
- ★ Electricity use was reduced by 246k kWh or 205% of the goal
- ★ Despite continued increases in the cost of electricity, the program saved the school over P1M
- ★ Focus and attention
- ★ Phase 2: Energy-savings lamps
- ★ Phase 3: Alternative Energy

Wastewater Recycling

- ★ Started discussions 2 school years ago
- ★ Water rates were going up and expected to continue increasing
- ★ Bulk of our water use was for flushing & washing
- ★ Rehabilitation of our football fields will require irrigation two times a day

Several Birds with One Stone

- ★ Investment
- ★ Cost Savings & Efficiency
- ★ Environmental Sustainability



MR. ARNOLD ACERO

EVP, Technotest

MBA, Thunderbird

BSBM, Ateneo

Xavier School

Thank You!

w4.xs.edu.ph

